

Ebitcam Camera

User's Manual

Note: To protect your privacy, please change the initial password after login. Please keep your user name and password safely.

Contents

1. Introduction.....	2
1.1 What Is the Ebitcam Camera?.....	2
2. Quick install and connect.....	3
2.1 Downloading the Ebitcam App.....	3
2.2 Creating an Account.....	4
2.3 Connecting the Device.....	4
2.4 Add camera to account.....	5
2.5 Select network connection method.....	5
2.5.1 Wi-Fi connection.....	6
2.5.2 Ethernet connection.....	7
3. Using Apps for iPhone and Android.....	8
3.1 Camera List Previews.....	8
3.2 Account Settings for Mobile Devices.....	8
3.3 View a camera's live video.....	9
3.4 Pan, Tilt, Zoom.....	9
3.5 SD card video recording setup.....	错误! 未定义书签。
3.6 The records page.....	错误! 未定义书签。
3.7 The settings page.....	错误! 未定义书签。
3.7.1 About.....	错误! 未定义书签。
3.7.2 Nickname.....	错误! 未定义书签。
3.7.3 Device Admin/Guest Password.....	错误! 未定义书签。
3.7.4 Network.....	错误! 未定义书签。
3.7.5 OSD (On Screen Display).....	错误! 未定义书签。
3.7.6 SD Card.....	错误! 未定义书签。
3.7.7 Storage Device.....	错误! 未定义书签。
3.7.8 Motion and Notification.....	错误! 未定义书签。
3.7.9 Scheduling Alerts.....	错误! 未定义书签。
3.7.10 Schedule Recording.....	错误! 未定义书签。
3.7.11 Date/Time.....	错误! 未定义书签。
3.7.12 System Settings.....	错误! 未定义书签。
3.7.13 Others.....	错误! 未定义书签。
4. Using the Website browser or PC client.....	19
4.1 Log In & Sign Up.....	19
4.2 Main Interface.....	20
4.3 Pan, Tilt.....	21
4.4 Playback.....	22
4.5 Settings.....	23
4.6 More (Account Settings).....	24

1. Introduction

Thank you for making the choice to purchase Ebitcam Camera. We're sure that you will love everything that this fantastic security camera has to offer from the ease of setup and use to all of the fantastic features it offers. In this manual, we'll cover everything you need to know about the camera, including how to set it up, how to download apps for your smartphone, and how to control all of the aspects of the camera right through our website.

Let's get started so you can get your camera set up and running to provide you with that added measure of security you need for your peace of mind.

1.1 What Is the Ebitcam Camera?

The Ebitcam Camera offers users a number of functions that help to make it an ideal solution to those looking for added security and peace of mind in both home and office settings. Let's examine some of the biggest benefits you will find now that you've chosen to use this security camera.

Traditional IP cameras tend to be difficult to install and use. The Ebitcam Camera does not have this issue. It's relatively simple to set up and use, as you will see through the course of this manual. It is a plug and play system, and offers a wealth of different features.

In addition, it offers:

- WI-FI/3G/4G remote monitoring for real time control from anywhere
- Video in 1M/2M/3M/4M HD
- Motion detection function
- Observe what is happening in real time from remote locations
- Capture and store video and images both manually and automatically
- Zoom in to get a better view of a specific area
- Communicate with people (or pets) in the viewing area
- Hear what is happening in the viewing area

Users will be able to work control and use their security camera through a variety of different devices, including iOS and Android devices. We will cover those devices, as well as how you can use them, throughout the course of this book.

2. Quick install and connect

One of the best features of this camera is the fact that you can operate and control it through multiple sources. You can use the interface on your computer at the www.ebitcam.com site, or you can download an app for your iOS or Android device - it will work with both phones and tablets. Let's examine how you can get and set up the app on each of these different platforms.

You can operate and control the cameras in several way by downloading and installing the Ebitcam app, available for the following platforms:

iOS or Android device (both phones and tablets). To use the application, you need to have:

- iOS devices: iOS 5.0 or above
- Android devices - Android 2.1 or above; at least 600MHz.

Laptop or computer for Windows or MAC

Webpage on the website by logging into your account at the www.Ebitcam.com site.

The following sections detail installing and using the Ebitcam mobile app for iOS and Android devices.

2.1 Downloading the Ebitcam App

There are several ways to download the Ebitcam application. These include:

- Scan QR code with the phone, to download and install the application " Ebitcam ".



- Download ' Ebitcam ' APP from APP Store(iOS) or Google Play Store(Android).
- PC users please download our APP: www.Ebitcam.com.

2.2 Creating an Account

To use the camera, you will need to set up an account with Ebitcam.

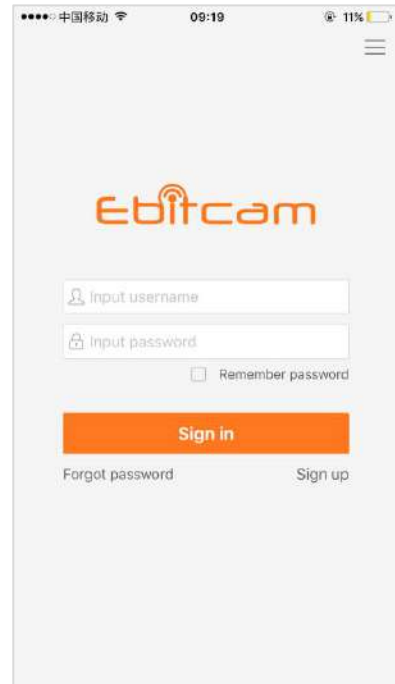
To create an account:

- In the Ebitcam app on your mobile device, press **I am a new user Sign up**.
- The Sign Up page opens. Create a **User name and a Password**.

Logging in to the EBITCAM Account

- Locate the Sign in link:
- Enter your user name and password in the appropriate fields.
- Click Sign in.

Note: If you forgot your password, you can click the *Forgot password link*.



2.3 Connecting the Device

Access to the camera is accomplished with an Ethernet or Wi-Fi connection:

- **Ethernet:** If you plan to use the device through a wired connection, you simply connect an Ethernet cable from the Ethernet interface to your router. The device will then show up on your network.
- **Wi-Fi:** If you plan to connect through Wi-Fi, you will find the camera on the network once it is hooked up and the power is turned on. You will be able to add the camera, using the Add a device option, on the Ebitcam app.

To connect your device to your network:

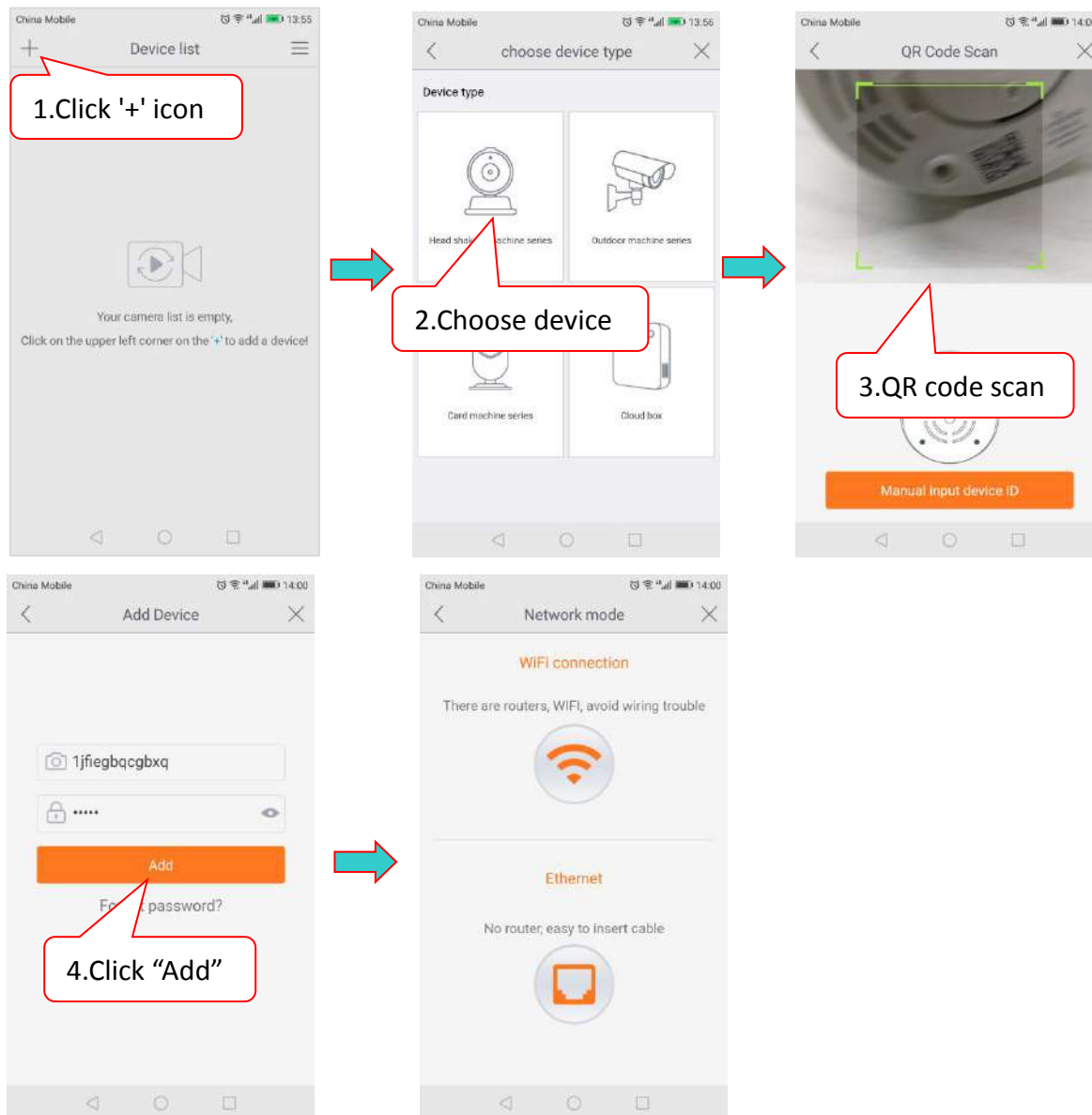
- Connect the device to a power source and wait approximately one minute for the camera to fully power On. If you connect via an Ethernet connection, the wired network light will flash green three times every three seconds, indicating that the camera is connected normally.
- Connect your mobile device to the same Wi-Fi on which the device is running.

Note: This only needs to be done once during the initial setup.

After you connect your device to the network, you need to log in to your EBITCAM account and add the device to it.

2.4 Add camera to account

Click on '+' in top left corner, select the device model, scan the QR code and add the device ID, and enter the network connection interface.

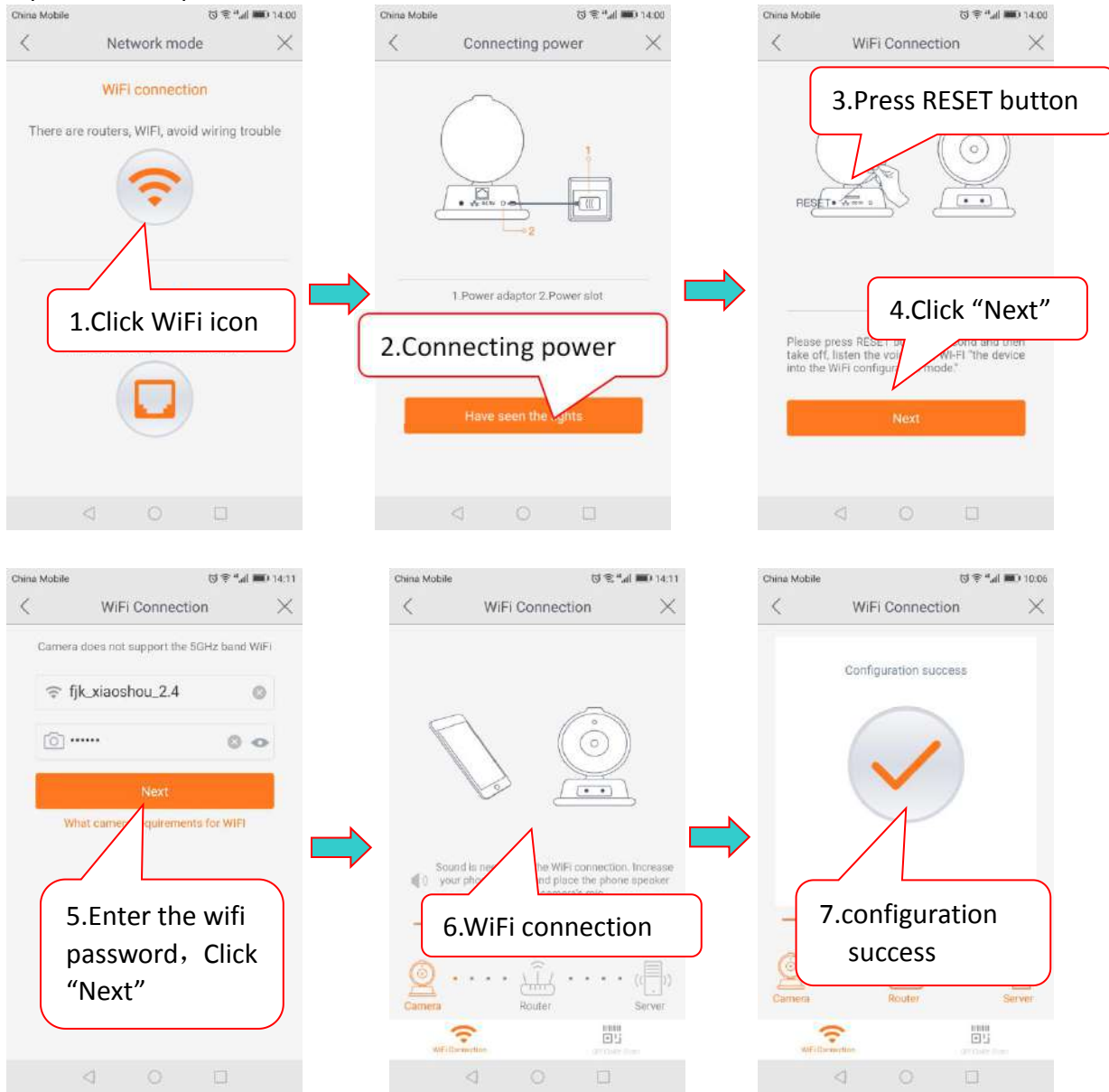


2.5 Select network connection method

When network configuration, you can choose Wi-Fi configuration or ethernet configuration.

2.5.1 Wi-Fi connection

Click the WiFi connection icon and press the RESET button to enter the WiFi configuration mode. Input the WiFi password, the connection should be successful!



Note: ① Press RESET key, hold for 1-2 seconds to enter the WiFi configuration, long press 10-12 seconds to restore the factory settings.

② If the WiFi configuration fails, check the following:

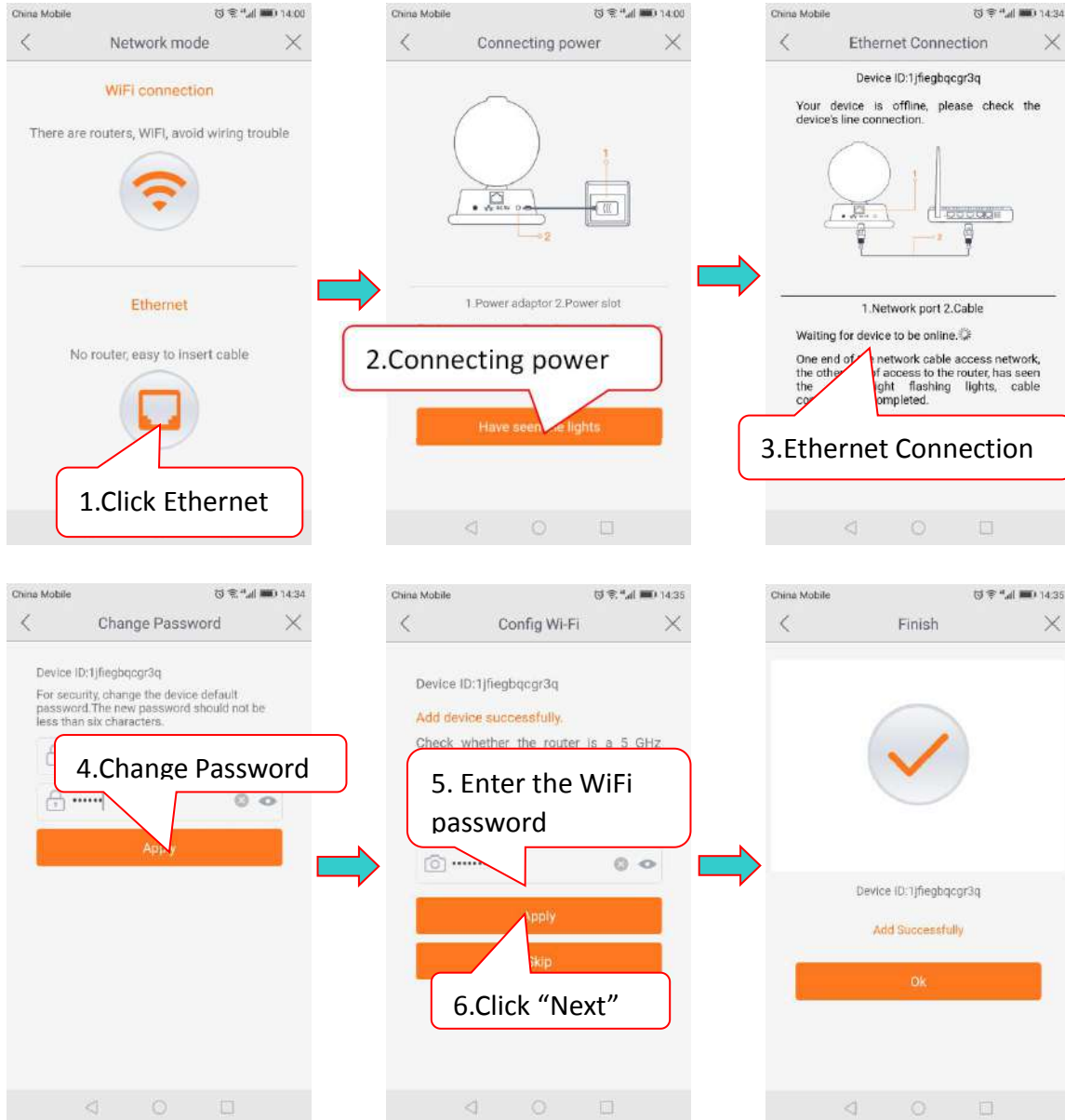
- That your wireless network is turned on and active.
- That you have entered the correct Wi-Fi password.
- That your Wi-Fi is 2.4 Ghz.

If it still unable to connect, try to connect using an Ethernet cable.

③ The Outdoor Cameras only supports wired connections for WiFi.

2.5.2 Ethernet connection

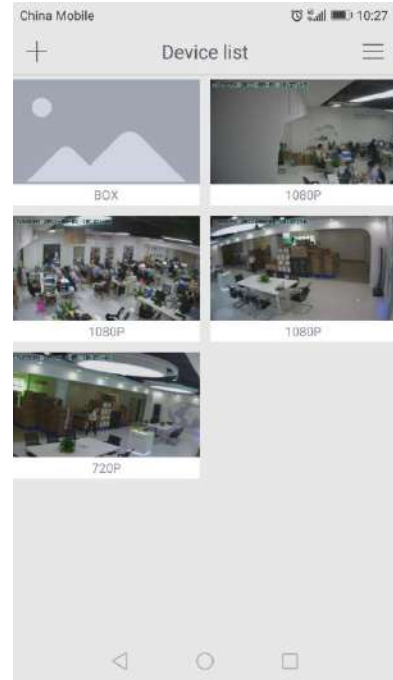
Plug in the network cable and click the Ethernet Connection icon to connect to the network, change the password, rename the device, set the time zone and you are now ready to access the device.



3. Using Apps for iPhone and Android

3.1 Camera List Previews

The camera list panel contains all cameras you have added to your account. Each preview picture has various indicators for online, password changed status, offline or alarm.



3.2 Account Settings for Mobile Devices

The Settings page for iOS and Android are very similar. Minor differences are Account Settings for Mobile Devices indicated below.

The Settings page for mobile devices contains the following options:

- **Notification Center:** Set the alarm mode, select the sound or vibration.

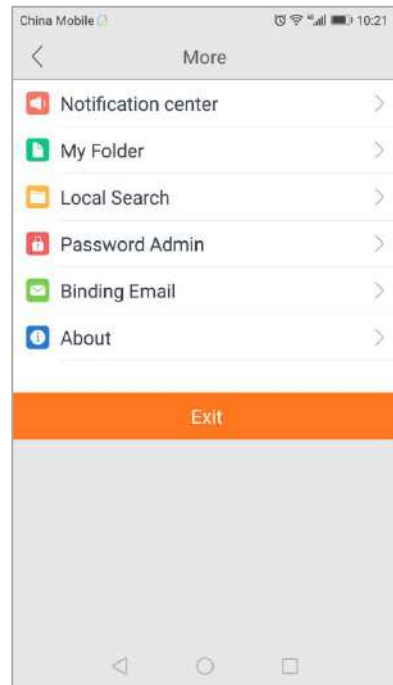
- **My Folder:** Check local recording

- **In the Password section:**

User admin password: Enter the Old password, and a new password, and then enter the new password again in the Confirm password field.

User guest password: If you wish to allow someone access to your Camera, you can assign them a user guest password, which can be disabled at any time. Guests can view what the cameras are broadcasting and can move the cameras, but they will not be able to make any changes in the settings or use the remote microphone.

- **Binding email:** Enter an email address. This is the email account to which Notification is sent when you ask to reset your password.



- **About:** Software version

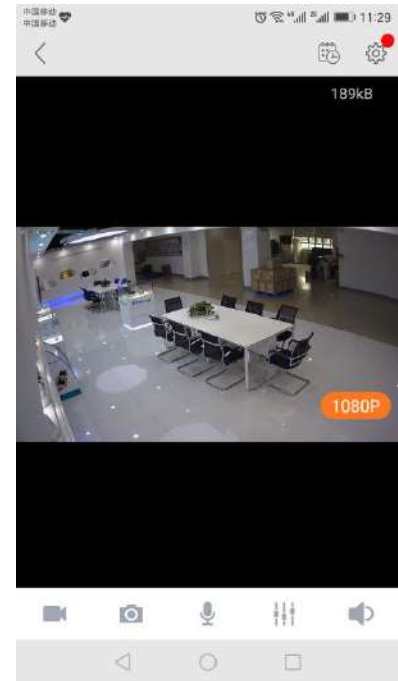
At the bottom of the screen, there is a Clear cache button. Click this to clear the cache on your mobile device. The original snapshots and/or videos stored on either your SD card or your Storage Device are not deleted when you click Clear Cache.

3.3 View a camera's live video

To view a camera's live video, touch a preview picture. Initial display will show a navigation bar with Buttons of record, snapshot, microphone, speaker, and Image setting buttons. The navigation bar will disappear after two seconds. Touch anywhere on the live view to activate it again.

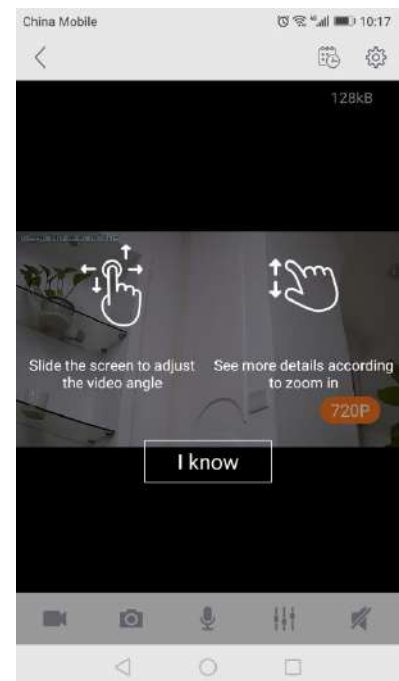
The following icons are located on each video image on the screen:

- **Record** (to initiate a live recording)
- **Snapshot** (to create a snapshot image of the current view)
- **Microphone** (to transmit your voice through the device)
- **Speaker** (to transmit remote sounds)
- **Image setting** (which enables you to set the mode for brightness, contrast, saturation, etc.)
- **Resolution** (user can choose the resolution of the images.)
- **History Access** (which opens to the History page and a filter)
- **Device settings** (which opens with a list of Settings tabs)



3.4 Pan, Tilt, Zoom

- **Pan:** Touch and swipe to the left or right to rotate the camera left or right.
- **Tilt:** Likewise, touch and swipe up or down to tilt the camera view up or down.
- **Zoom :** Zoom is accomplished two fingers touching the screen as if to pinch. Move two touching fingers apart to zoom in; Move two fingers together to zoom out.



3.5 SD card video recording setup

Please go to Setting to enable the recording function after the SD card is inserted into the card slot on the camera.

Note: Please insert and remove the SD Card when the power switch is in the OFF position.

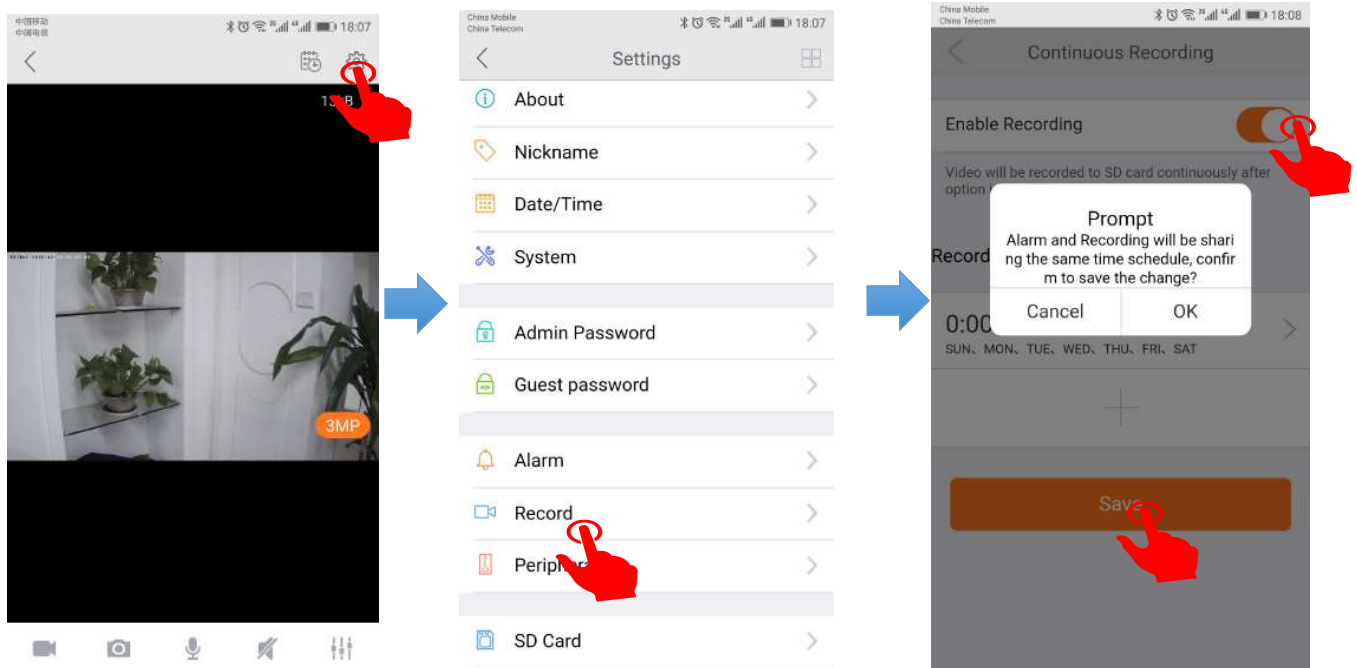
Step 1: View the video

Step 2: Go to Setting Page

Step 3: Select 'Record'

Step 4: Select 'Continuous Recording'

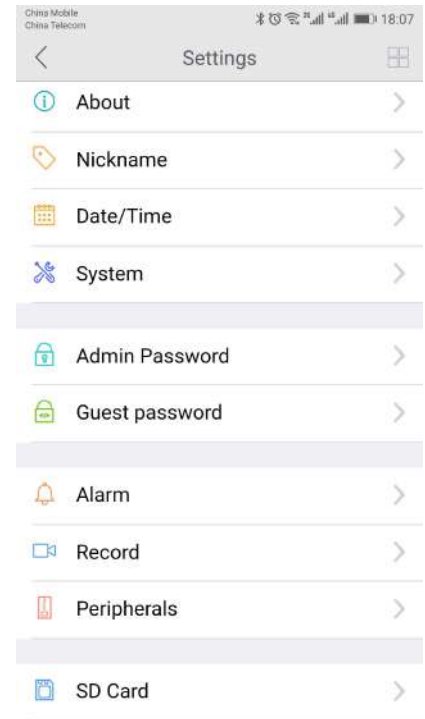
Step 5: Open the 'Enable Recording' button, Click 'Apply'



3.6 Device Settings

The Device Settings Page features a number of different tabs that are just to the right of your cameras. You are able to switch between the different cameras to access the settings information for each of them. Let's look at the long list of items under this section.

- **About**
- **Nickname**
- **Date/Time**
- **System**
- **Admin Password**
- **Guest Password**
- **Alarm**
- **Record**
- **Accessory**
- **SD Card**
- **Storage Device**
- **Cloud storage**
- **Network**
- **OSD (On Screen Display)**
- **Others**



3.6.1. About

In this section, you will find information about the particular camera that you are using.

It features several sections:

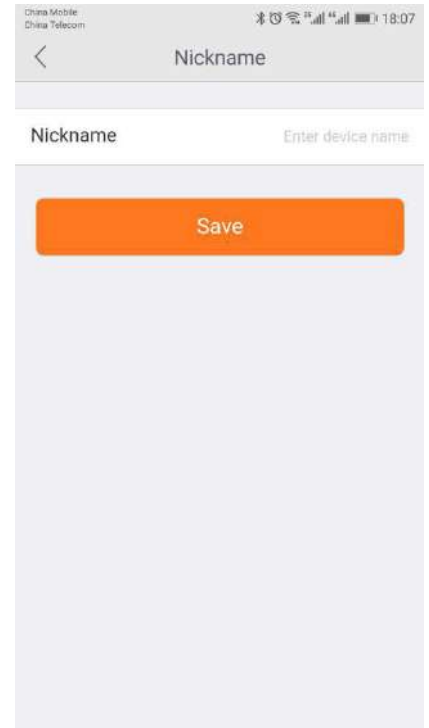
- **Model** - Shows the model of the camera you are using.
- **Firmware Version** - This shows the current firmware version you are using.
- **Device ID** - This is the identifying number for your device.



3.6.2. Nickname

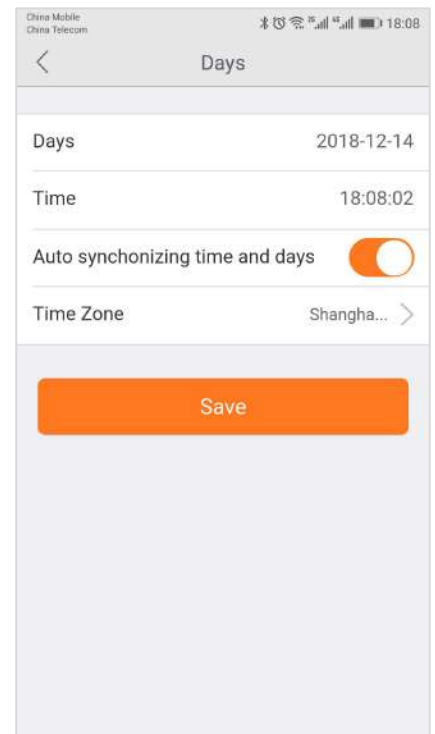
In this section, you will be able to enter a nickname for your camera. Simply type the name into the box and then click on apply.

Now, that camera will go by that particular nickname when it shows up on the left side of the screen. This can make it nice and easy to know which camera is which quickly.



3.6.3 Date/Time

In the Date/Time tab, you can set the date and time for your camera. Choose the date, time, and the time zone. You can also choose to synchronize to the local date and time automatically. However, you can change the time manually if you prefer. You will want to have the correct date and time so you can schedule your recordings correctly.



3.6.4 System

Under System, there are three sections under System, as detailed below:

- **Online upgrade**

Online upgrade displays the current version number and shows if there is a newer version. You will see a red dot next to the Setting icon identifying that there is a new upgrade available. To download and install the latest software version, click Update.

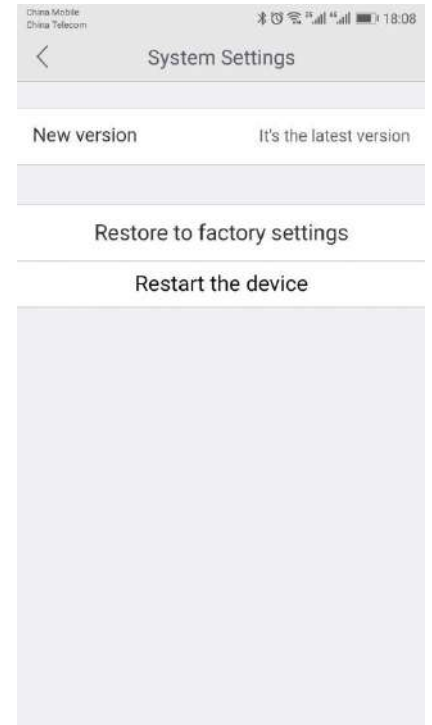
- **Restore to factory settings**

If you click Restore, it will restore the camera to the factory defaults, which can restore to factory settings be helpful in case you have made changes to the camera and want to cancel these changes.

- **Restart device**

Clicking Restart reboots the camera. It is the same as unplugging the camera and plugging it back in again but is accomplished remotely.

Note: When the camera goes offline, such as when using the Restart button, the snapshots are deleted if you do not have storage.



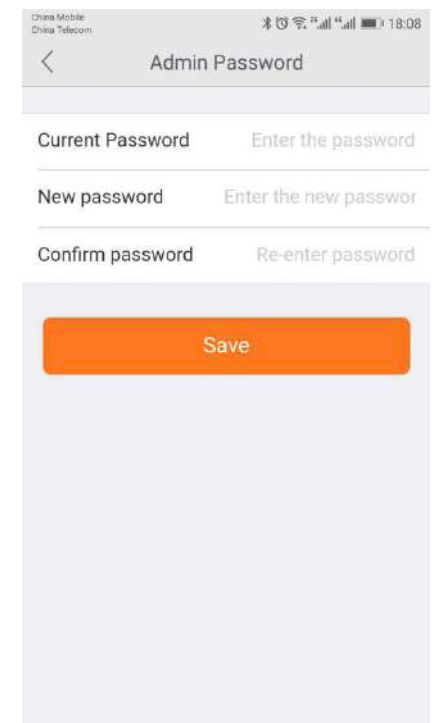
3.6.5 Device Admin/Guest Password

- **Admin Password**

Each camera can have an Admin password. You can choose to give a person admin permissions on a single camera, but not all of the other cameras in your system, when you change the password through this setting.

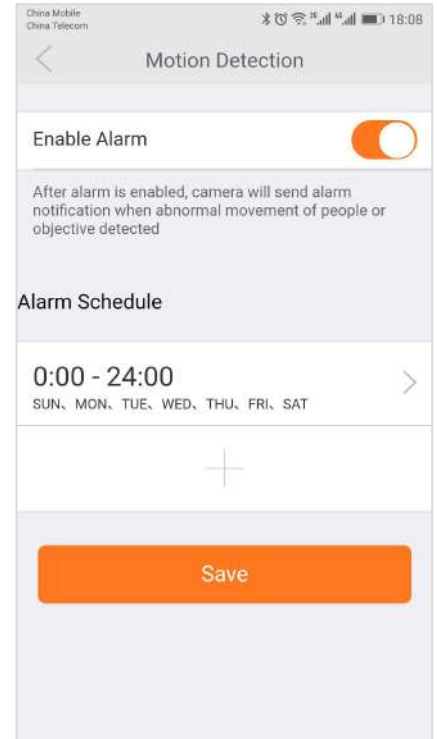
- **Guest Password**

If you wish to grant someone access to your camera, you can assign them a device guest password, which can be disabled at any time. Guests can view what the cameras are broadcasting and can move the cameras, but they will not be able to make any changes in the settings or use the remote microphone.



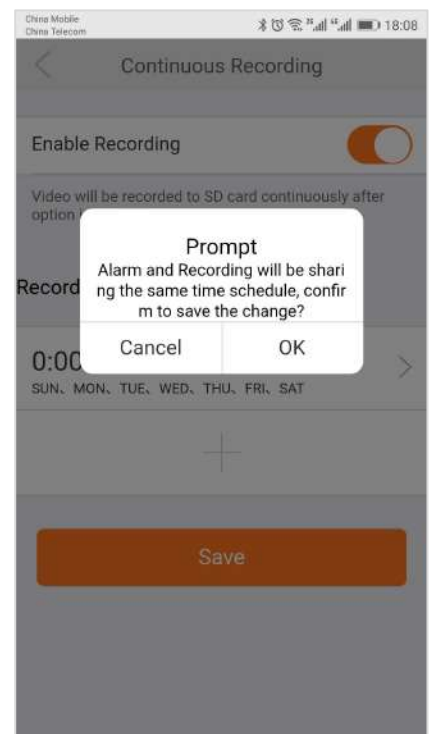
3.6.6 Alarm

The camera carries the motion detection and alarm. After the motion detection is opened, the alarm information can be sent to the mobile phone when the camera detects the moving events and the objects are moved.



3.6.7 Record

Under the Record tab, you have the ability to enable recordings based on two different options: Continuous Recording and Event record. You should enable one of these options if you wish to schedule recording times automatically.



3.6.8 Accessory

The cameras can detect motion in the viewing areas and can as a result of that detection, take a snapshot, record a video, trigger an alert, etc.

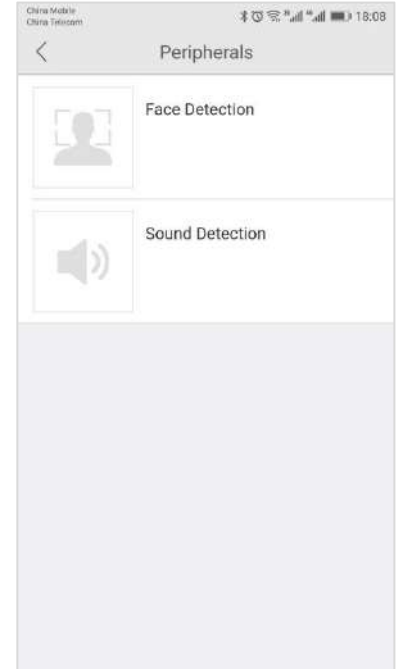
The Accessory tab offers two options to configure what the camera should do if and when motion is detected in the covered area:

- **Motion Detection**

Select the Motion Detection tab to determine how sensitive the camera is when it comes to sensing motion. You can change the sensitivity settings for day and night operation separately to improve motion detection.

- **Add Accessory**

The Add Accessory is for external devices connected to the camera. This setting will only occur if the camera has RF peripheral functions.

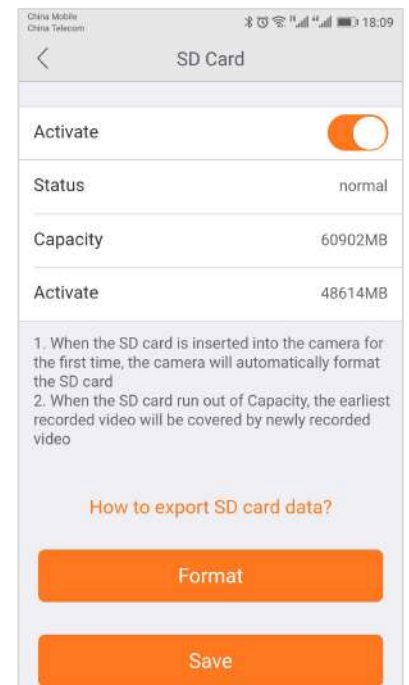


3.6.9 SD Card

The SD Card section indicates whether you have an SD card in the camera and whether it is enabled.

- To use the SD card, place it into the slot on the back of the camera.
- If the camera does not recognize the SD card, remove the card and unplug the camera. Put in the SD card and then plug in the camera. The camera will reboot, and then it should be recognized.

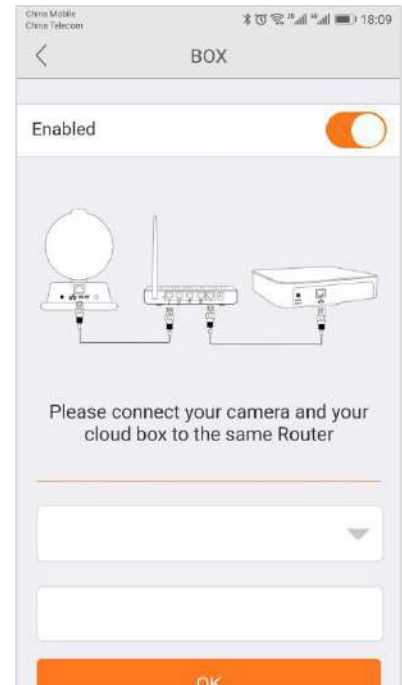
Note: It is always recommended that you format the card after installation.



3.6.10 Recording Device

Using the Recording Device option, you can introduce another element of The Recording Device , the Cloud Box. The Cloud Box is an ideal DIY (Do It Yourself) security solution for homes and small businesses that require the recording of many hours of continuous video.

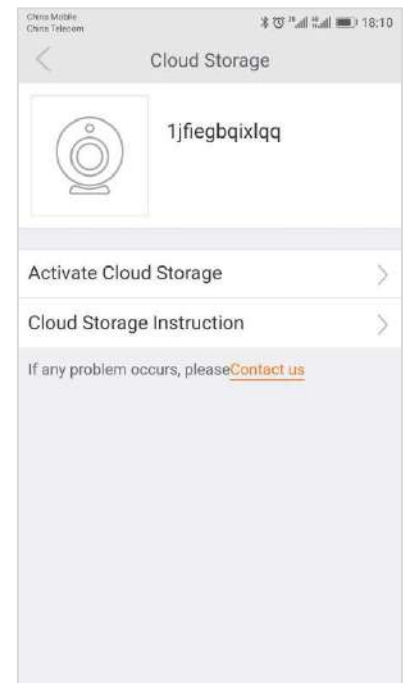
To use a Cloud Box, you must first connect the Cloud Box to the same network where one or more cameras are connected. Once you have confirmed that the Cloud Box is connected, you need to enter the Cloud Box ID and password and enable its use in the Recording Device tab.



3.6.11 Cloud Storage

The cloud storage function is a video storage function developed by wireless ip cameras based on moving object detection technology.

When a camera detects moving events such as someone walked and objects were moved, the camera will automatically start to record, and highly encrypted upload to the cloud. At the same time effectively avoiding the loss of key evidence caused by human destruction, SD card damage, you can feel at ease.

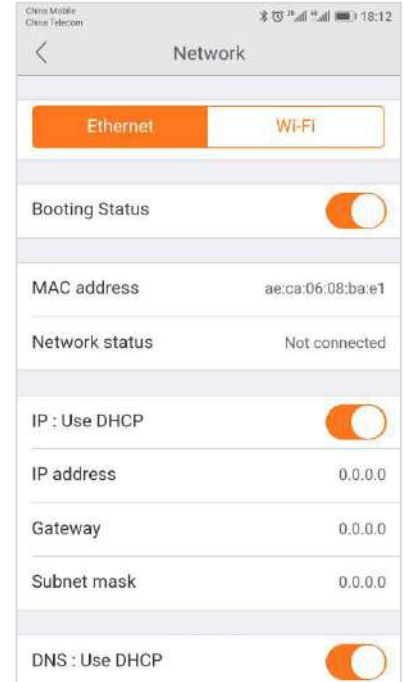


3.6.12 Network

Warning: If you change the settings on this tab, it is possible that the network can be disconnected.

The Network Tab enables you to choose the network interface that you want to use - Ethernet or Wi-Fi. When you choose Ethernet, you can view the MAC address, the network status, and the IP information.

Once your device is connected, it is recommended that you do not change the settings or click Apply on the Network tab, as this is likely to cause you to be disconnected from the Network.

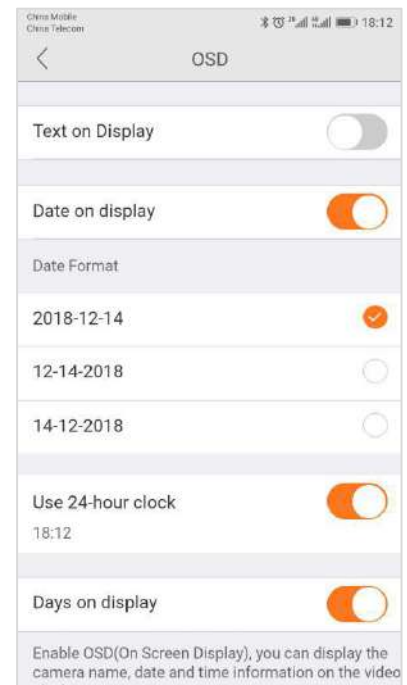


3.6.13 OSD (On Screen Display)

In the OSD tab, you are able to manage what displays on the video screen. These settings include:

- **Display Text** - Add text that will show up on the video screen.
- **Display Date** - Choose whether to display the date on the screen and the type of date format (MM-DD-YYY or YYY-MM-DD).
- **Display Time** - Choose whether to display the time on the screen and the time format (12 hour or 24 hour).
- **Display Day of the Week** - Choose whether to display the day of the week on the live screen.

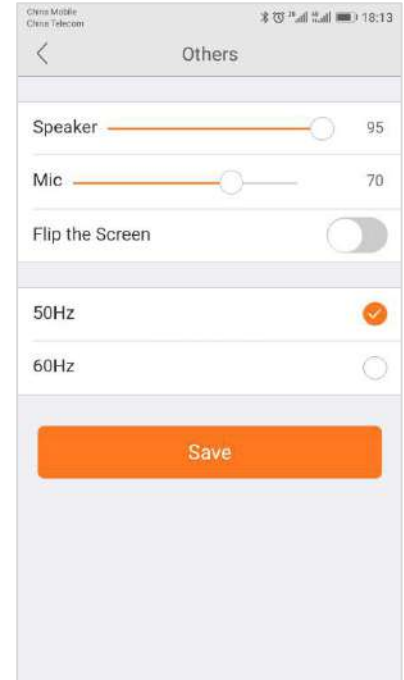
After changing the settings, click Apply.



3.6.14 Others

Use the sliders to adjust the Speaker and the Microphone. You can make the Others volume higher or lower with these sliders. Sliding to the right makes the volume go higher, and sliding to the left makes it lower.

Flip is used when the camera is mounted upside down (for example, when it is attached to a ceiling). It will flip the images viewed from the camera (either snapshot or recordings) so that they appear properly.

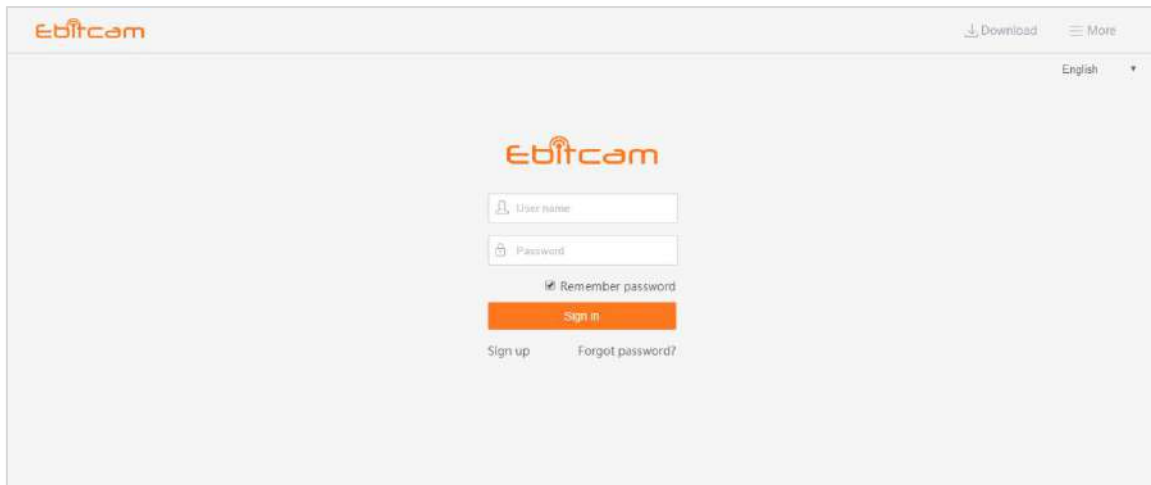


4. Using the Website browser or PC client

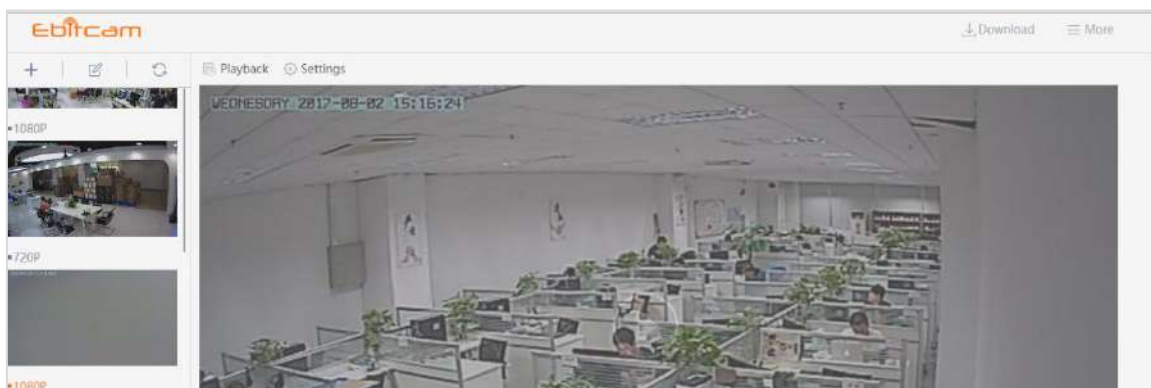
To access camera via web browser or download for PC client, please visit www.Ebitcam.com. Connect camera to your network with the included Ethernet cable.

4.1 Log In & Sign Up

- In your Web browser, go to www.Ebitcam.com. The following window appears:



- Enter your **User name** and **Password**, and click **Sign in**. (If you are a new user, Select “Sign up” and create a Username and Password.)
- The first time you log in, you need to install the video plugin.
- The website interface opens. If devices have been added, the current image for each active device is shown in the dashboard.



Note: for better viewing experience, you can download the EBITCAM PC client by clicking the "Download" in the upper right corner of the login screen.

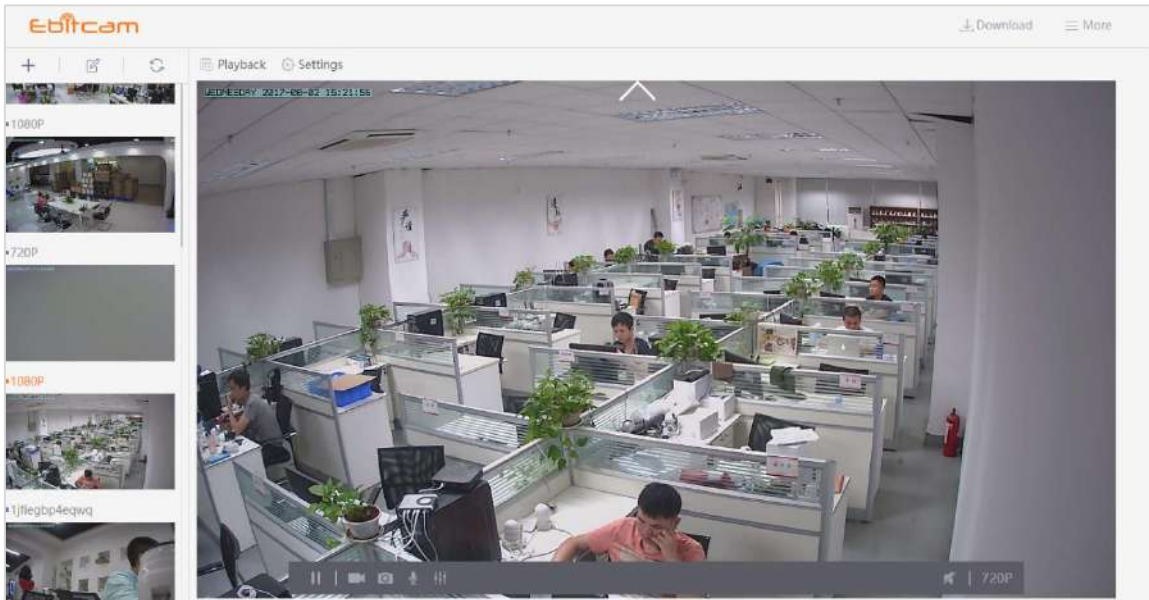
4.2 Main Interface

The camera features a number of different settings, all of which you will be able to access through the main interface. Keep in mind that when you are changing the settings, which we will be discussing in this chapter, the camera must first be live and active.



- ① **Device Add button:** Click the "+" to complete the device addition according to the wizard.
- ② **Device delete button:** Click to delete the added device.
- ③ **Device refresh button:** Show all device thumbnails
- ④ **Device Thumbnails:** For each device that has been added to the account, one thumbnail appears.
Below the image, the Nickname of the device is listed.
- ⑤ **Stop/ Play:** Press the button and you will be able to see the live feed.
- ⑥ **Record:** to initiate a live recording.
- ⑦ **Snapshot:** to create a snapshot image of the current view.
- ⑧ **Microphone:** to transmit your voice through the device.
- ⑨ **Image setting:** which enables you to set the mode for brightness, contrast, saturation, etc.
- ⑩ **Speaker:** to transmit remote sounds.
- ⑪ **Resolution:** user can choose the resolution of the images.

4.3 Pan, Tilt

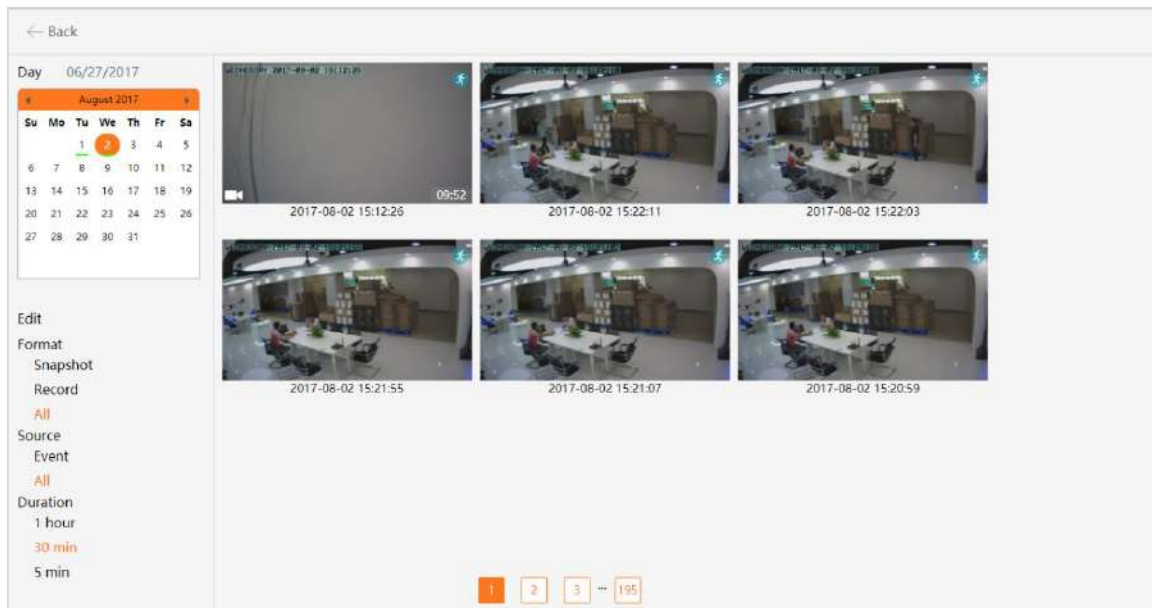


(\leftarrow \rightarrow \wedge \vee) On computers only: move camera left, right, up and down using directional controls. These controls are only available as you move the mouse to hover over the display edges (top, bottom, left and right in the middle). *Not all cameras provide the full range of rotation, panning, tilting, etc.*

Note: *The screen can not be zoomed on the computer.*

4.4 Playback

If you do not have an SD card in your camera, this will be a blank screen. If you do have an SD card in your camera and you capture videos, you will see a list of videos on the this screen.



- **Day:** Quickly view video time
- **Edit:** Delete the video
- **Snapshot:** Clicking on one of the pictures will open up the image into a separate popup, making it larger and easier to see.
- **Record:** Under the Records column, it will show you whether the record indicates video.
- **Event:** Display motion detection video.
- **Duration:** Select the length of each video recording, the default is half an hour.

4.5 Settings

About	
Nickname	Model f119
Admin password	Firmware Version v4.3.2.1703291546
Guest password	Plug-in version Not installed
Network	Device ID: 1j1legbp24mwq
OSD	
SD Card	
Storage Device	
Motion sensitivity	
Motion detection	
Schedule Alerts	
Schedule Record	
Day/Time	
System	
Others	
Delete	

- **About:** Provides information about your device.
- **Nickname:** Set a user-friendly name for your device.
- **Admin Password:** Change the Admin password for device.
- **Guest Password:** Create a Guest password for device.
- **Network:** Configure network settings.
- **OSD (On Screen Display):** Modify the on-screen display settings.
- **SD Card:** Enable the use of an SD Card. You can also format and unmount the SD Card.
- **Storage Device:** Enable a Cloud Box for additional storage, then enter the device ID and password.
- **Motion sensitivity:** You can change the sensitivity settings for day and night operation separately to improve motion detection.
- **Scheduling Alerts:** Schedule specific times when alerts should be active.
- **Schedule Record :** Schedule times when you want the camera to record. Options are either 24/7 or at specific times.
- **Date/Time:** Set the date and time for the device.
- **System:** Set System options such as restoring to factory settings, restarting, etc.
- **Others:** Miscellaneous options such as flipping the camera view, adjusting the audio, etc.
- **Delete:** Delete the device.

4.6 More (Account Settings)



The Settings page contains the following options:

- **Software Version** – View the current version of the software
- **Account Admin Password** – This enables you to change your account password.
- **Account Guest Password** – If you wish to allow someone access to your camera, you can assign them a user guest password, which can be disabled at any time. Guests can view what the cameras are broadcasting and can move the cameras, but they will not be able to make any changes in the settings or use the remote microphone.
- **Connect Email** – Enter an Email address. This is the email account to which notification is sent when you ask to reset your password.
- **Exit** – Exit the current account.